

# Hampshire Water Transfer and Water Recycling Project Environmental Statement - Figure 12.3 Commercial property and land

**VOLUME NUMBER: 6**

**PLANNING INSPECTORATE SCHEME NUMBER: WA010002**

**APPLICATION DOCUMENT REFERENCE: 6.3**

**APFP REGULATION: 5(2)(a)**

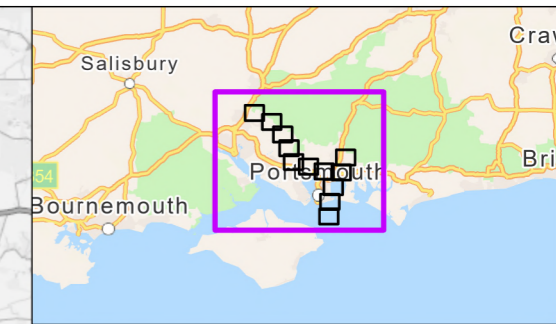
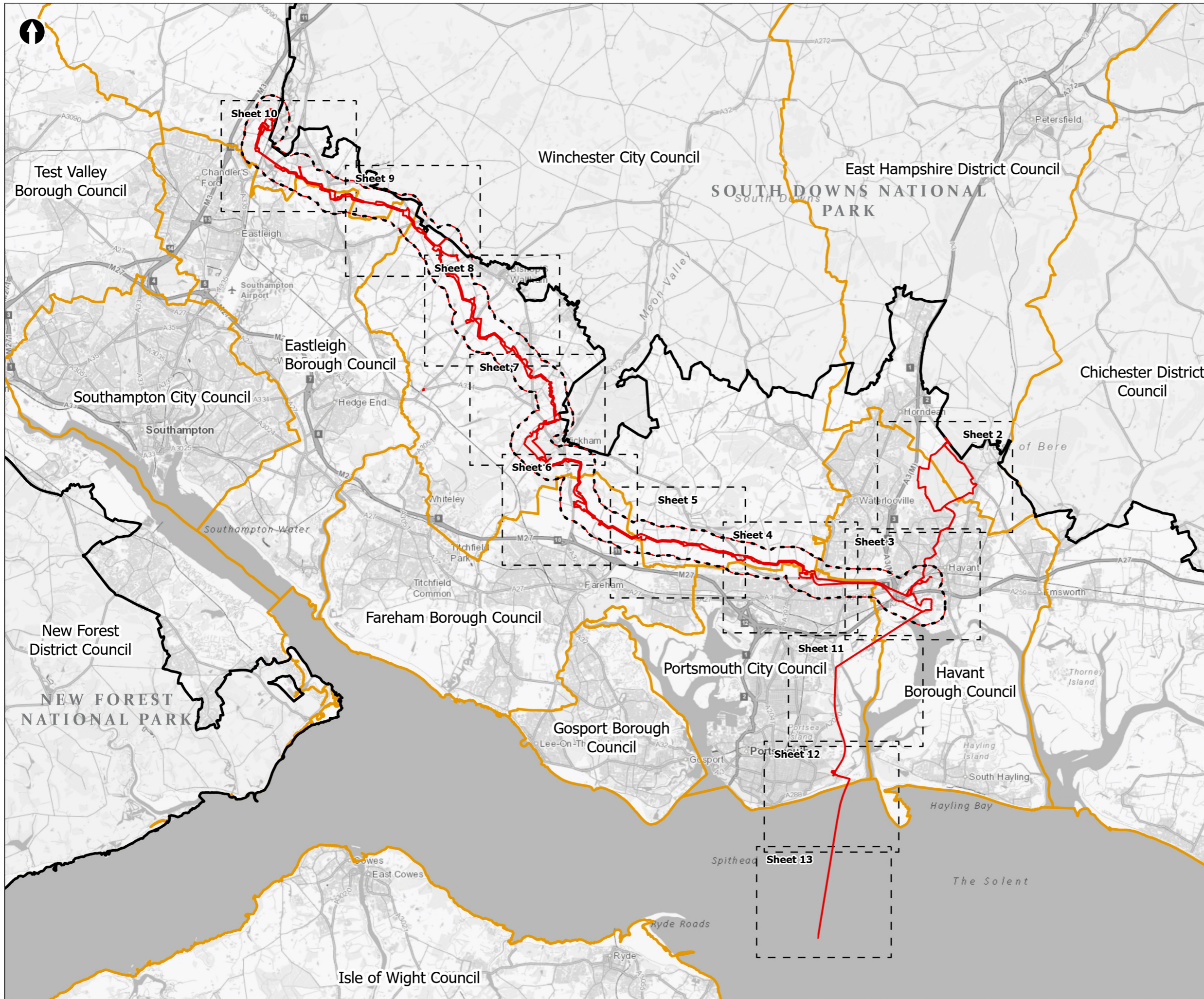
May 2026

Version 0



from  
**Southern  
Water** 





- Order Limits
- Land use and agriculture study area (500m buffer)
- Sheet Extent Boxes 1:15K
- National Parks
- Local planning authorities

Coordinate system: British National Grid; Datum: OSGB 1936  
 Data sources: © Crown copyright and database rights 2026 Ordnance Survey 0100031673. Contains OS data © Crown Copyright and database right 2020. Sources: Esri, TomTom, Garmin, FAO, NOAA, USGS, © OpenStreetMap contributors, and the GIS User Community

PROJECT TITLE  
 Hampshire Water Transfer and Water Recycling Project

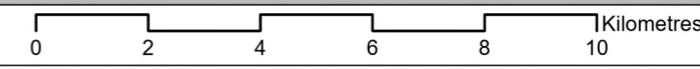


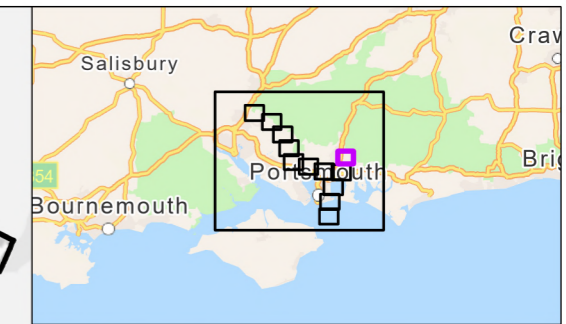
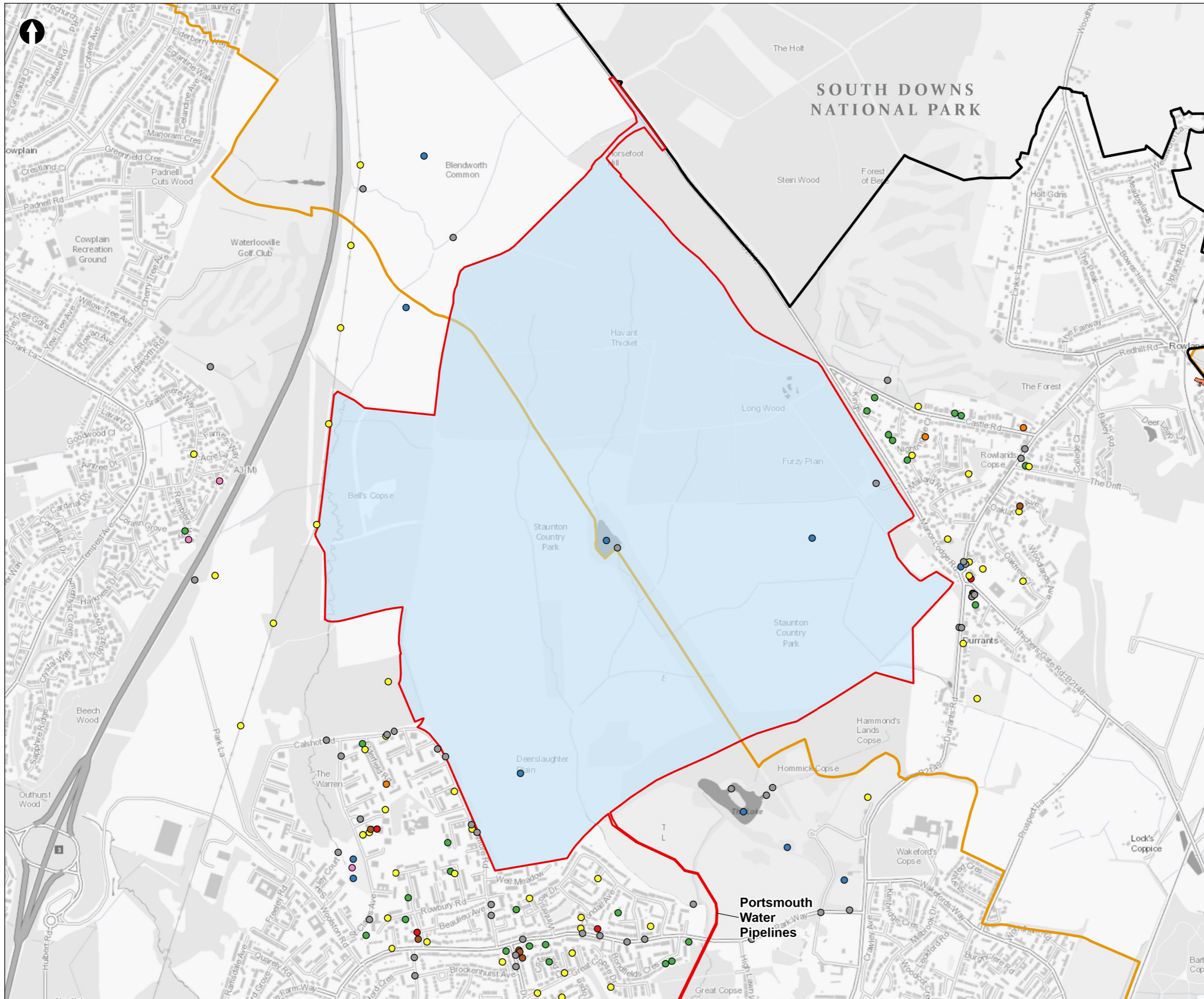
Figure 12.3  
 Commercial property and land  
 Sheet 1 of 13

Drawn <b>DL</b>	GIS Checked <b>MW</b>	Checked <b>MP</b>	Approved <b>AK</b>
Scale at A3 <b>1:135,000</b>	Status <b>Final</b>	Revision <b>05</b>	Security <b>STD</b>

Drawing Number  
**PC5223-RHD-ES-ZZ-D-Z-0124**

© Southern Water 2026  
 This document is issued for the party which commissioned it and for specific purposes connected with the captioned project only. It should not be relied upon by any other party or used for any other purpose. We accept no responsibility for the consequences of this document being relied upon by any other party, or being used for any other purpose, or containing any error or omission which is due to an error or omission in data supplied to us by other parties.





- Order Limits
- Sheet Extent Boxes 1:15K
- National Parks
- Local planning authorities
- Points of Interest (POI)**
- Accomodation, eating and drinking
- Attractions
- Commercial Services
- Manufacturing and Production
- Public Infrastructure
- Retail
- Sport and Entertainment
- Transport
- Important Buildings**
- Medical Care
- Retail
- Proposed Development components**
- Havant Thicket Reservoir

Coordinate system: British National Grid; Datum: OSGB 1936  
 Data sources: © Crown copyright and database rights 2026 Ordnance Survey 0100031673. Contains OS data © Crown Copyright and database right 2020, Sources: Esri, TomTom, Garmin, FAO, NOAA, USGS, © OpenStreetMap contributors, and the GIS User Community

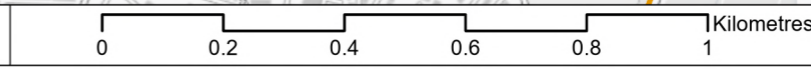
PROJECT TITLE  
 Hampshire Water Transfer and Water Recycling Project



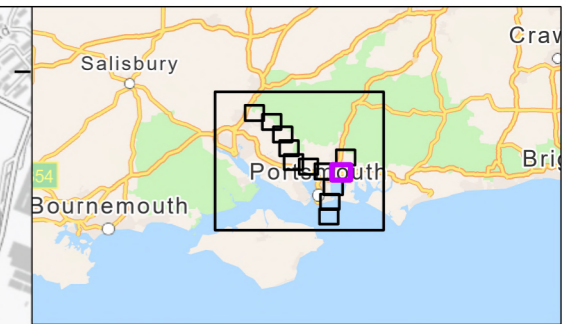
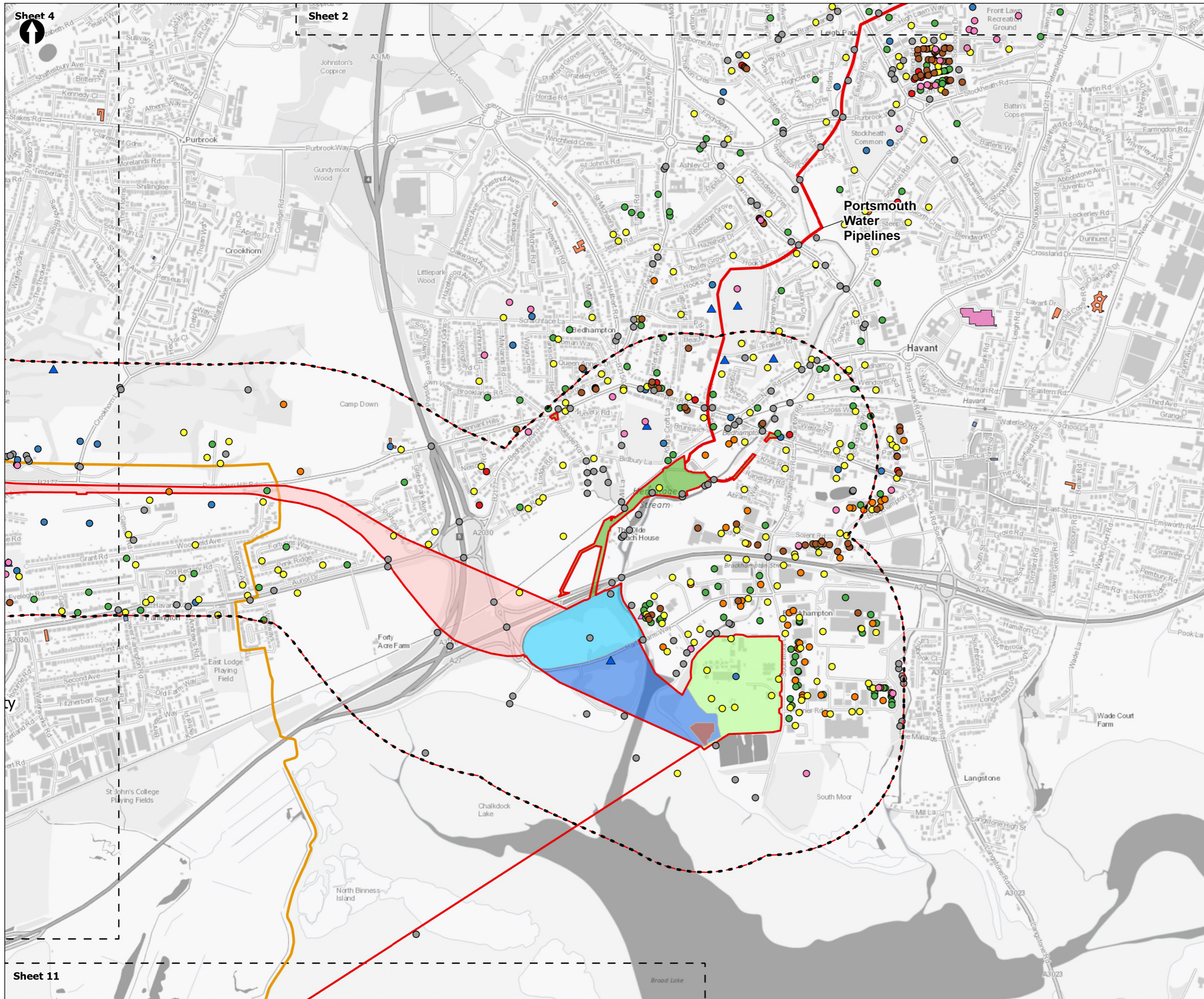
Figure 12.3  
 Commercial property and land  
 Sheet 2 of 13

Drawn <b>DL</b>	GIS Checked <b>MW</b>	Checked <b>MP</b>	Approved <b>AK</b>
Scale at A3 <b>1:12,500</b>	Status <b>Final</b>	Revision <b>05</b>	Security <b>STD</b>

© Southern Water 2026  
 This document is issued for the party which commissioned it and for specific purposes connected with the captioned project only. It should not be relied upon by any other party or used for any other purpose.  
 We accept no responsibility for the consequences of this document being relied upon by any other party, or being used for any other purpose, or containing any error or omission which is due to an error or omission in data supplied to us by other parties.



Drawing Number  
**PC5223-RHD-ES-ZZ-D-Z-0124**



- Order Limits
- Land use and agriculture study area (500m buffer)
- Sheet Extent Boxes 1:15K
- Local planning authorities
- Points of Interest (POI)**
- Accommodation, eating and drinking
- Attractions
- Commercial Services
- Manufacturing and Production
- Public Infrastructure
- Retail
- Sport and Entertainment
- Transport
- Noise Sensitive Receptors**
- ▲ Business park
- ▲ Open space and recreation
- Important Buildings**
- Medical Care
- Retail
- Sports Or Exercise Facility
- Proposed Development components**
- Budds Farm Wastewater Treatment Works Pumping Station
- Limits of Deviation for Budds Farm Pumping Station
- Pipelines between the Water Recycling Plant site and Bedhampton Springs
- Water Recycling Plant site
- Pipelines between Budds Farm Wastewater Treatment Works and the Water Recycling Plant site
- Pipeline between the Water Recycling Plant site and Otterbourne Water Supply Works**
- Section D: The Water Recycling Plant site to Portsdown Hill

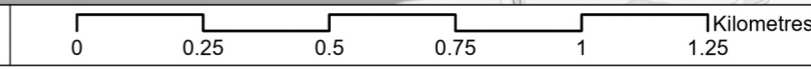
Coordinate system: British National Grid; Datum: OSGB 1936  
 Data sources: © Crown copyright and database rights 2026 Ordnance Survey 0100031673. Contains OS data © Crown Copyright and database right 2020, Sources: Esri, TomTom, Garmin, FAO, NOAA, USGS, © OpenStreetMap contributors, and the GIS User Community

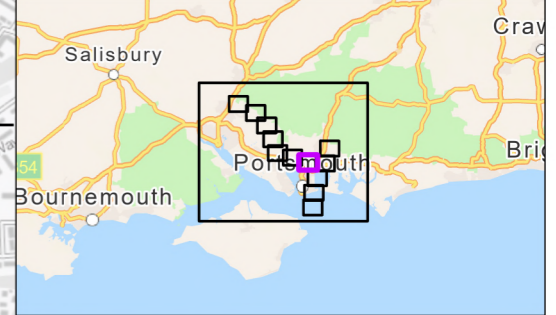
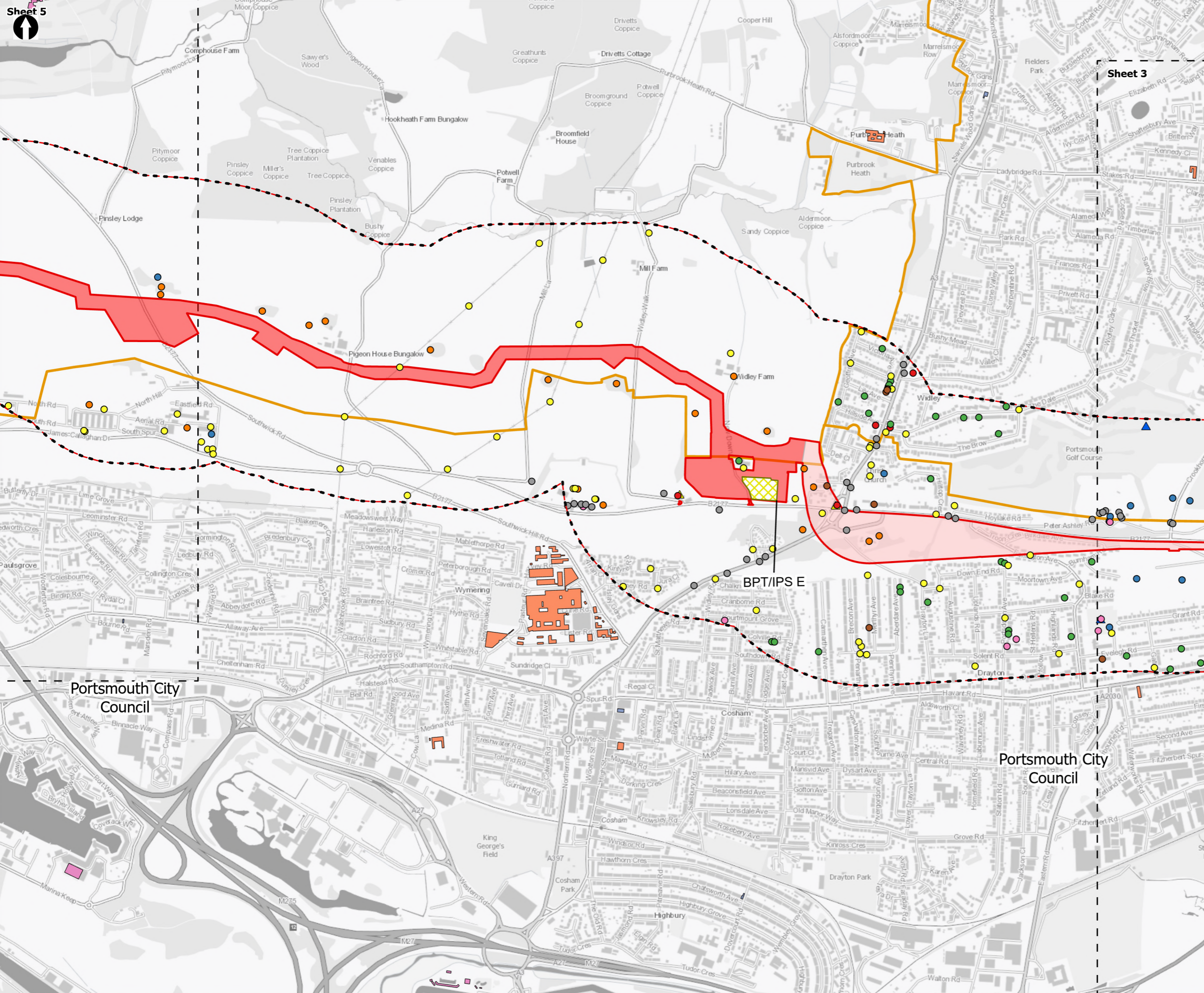
PROJECT TITLE  
 Hampshire Water Transfer and Water Recycling Project



Figure 12.3  
 Commercial property and land  
 Sheet 3 of 13

Drawn DL	GIS Checked MW	Checked MP	Approved AK
Scale at A3 1:15,000	Status Final	Revision 05	Security STD





- Order Limits
- Land use and agriculture study area (500m buffer)
- Sheet Extent Boxes 1:15K
- Local planning authorities
- Points of Interest (POI)**
- Accommodation, eating and drinking
- Attractions
- Commercial Services
- Manufacturing and Production
- Public Infrastructure
- Retail
- Sport and Entertainment
- Transport
- Noise Sensitive Receptors**
- ▲ Open space and recreation
- ▲ Restaurant
- Important Buildings**
- Medical Care
- Retail
- Sports Or Exercise Facility
- Pipeline between the Water Recycling Plant site and Otterbourne Water Supply Works**
- Section D: The Water Recycling Plant site to Peter Ashley Hill
- Section E: Portsdown Hill to Boarhunt
- Above Ground Plant**
- Break Pressure Tank & Intermediate Pumping Station

Coordinate system: British National Grid; Datum: OSGB 1936  
 Data sources: © Crown copyright and database rights 2026 Ordnance Survey 0100031673. Contains OS data © Crown Copyright and database right 2020, Sources: Esri, TomTom, Garmin, FAO, NOAA, USGS, © OpenStreetMap contributors, and the GIS User Community

Portsmouth City Council

Portsmouth City Council

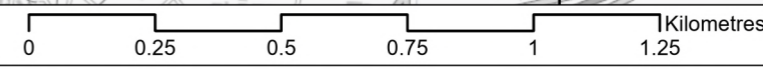
PROJECT TITLE  
 Hampshire Water Transfer and Water Recycling Project

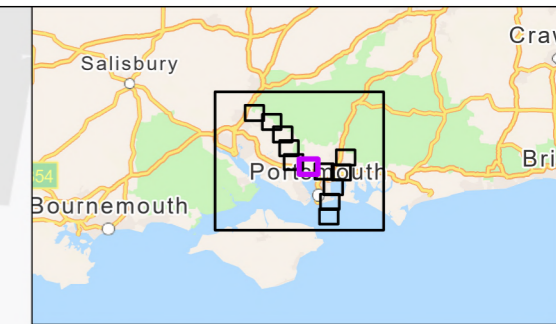
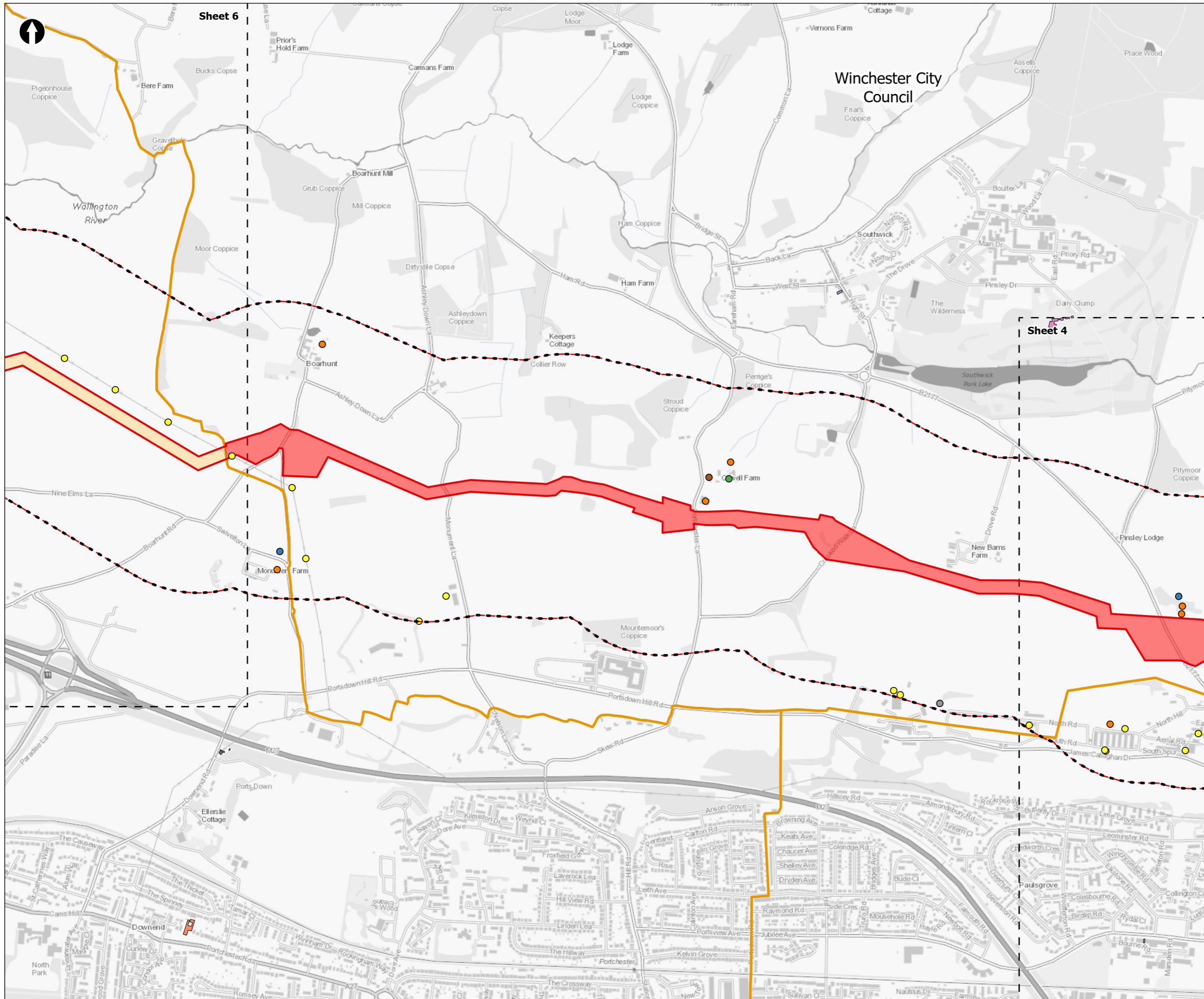


Figure 12.3  
 Commercial property and land  
 Sheet 4 of 13

Drawn <b>DL</b>	GIS Checked <b>MW</b>	Checked <b>MP</b>	Approved <b>AK</b>
Scale at A3 <b>1:15,000</b>	Status <b>Final</b>	Revision <b>05</b>	Security <b>STD</b>

Drawing Number  
**PC5223-RHD-ES-ZZ-D-Z-0124**





**Order Limits**

- Land use and agriculture study area (500m buffer)
- Sheet Extent Boxes 1:15K
- Local planning authorities

**Points of Interest (POI)**

- Attractions
- Commercial Services
- Manufacturing and Production
- Public Infrastructure
- Retail
- Transport

**Important Buildings**

- Medical Care
- Retail
- Sports Or Exercise Facility

**Pipeline between the Water Recycling Plant site and Otterbourne Water Supply Works**

- Section E: Portsdown Hill to Boarhunt
- Section F: Boarhunt to Crockerhill

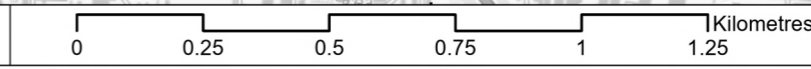
Coordinate system: British National Grid; Datum: OSGB 1936  
 Data sources: © Crown copyright and database rights 2026 Ordnance Survey 0100031673. Contains OS data © Crown Copyright and database right 2020. Sources: Esri, TomTom, Garmin, FAO, NOAA, USGS, © OpenStreetMap contributors, and the GIS User Community

PROJECT TITLE  
 Hampshire Water Transfer and Water Recycling Project

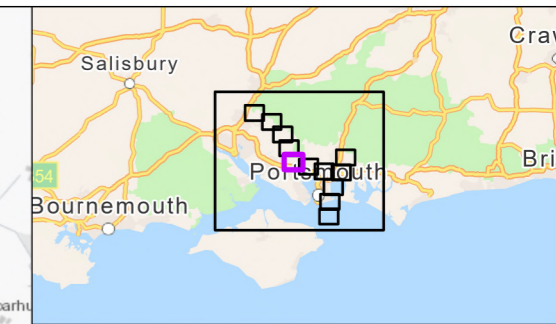
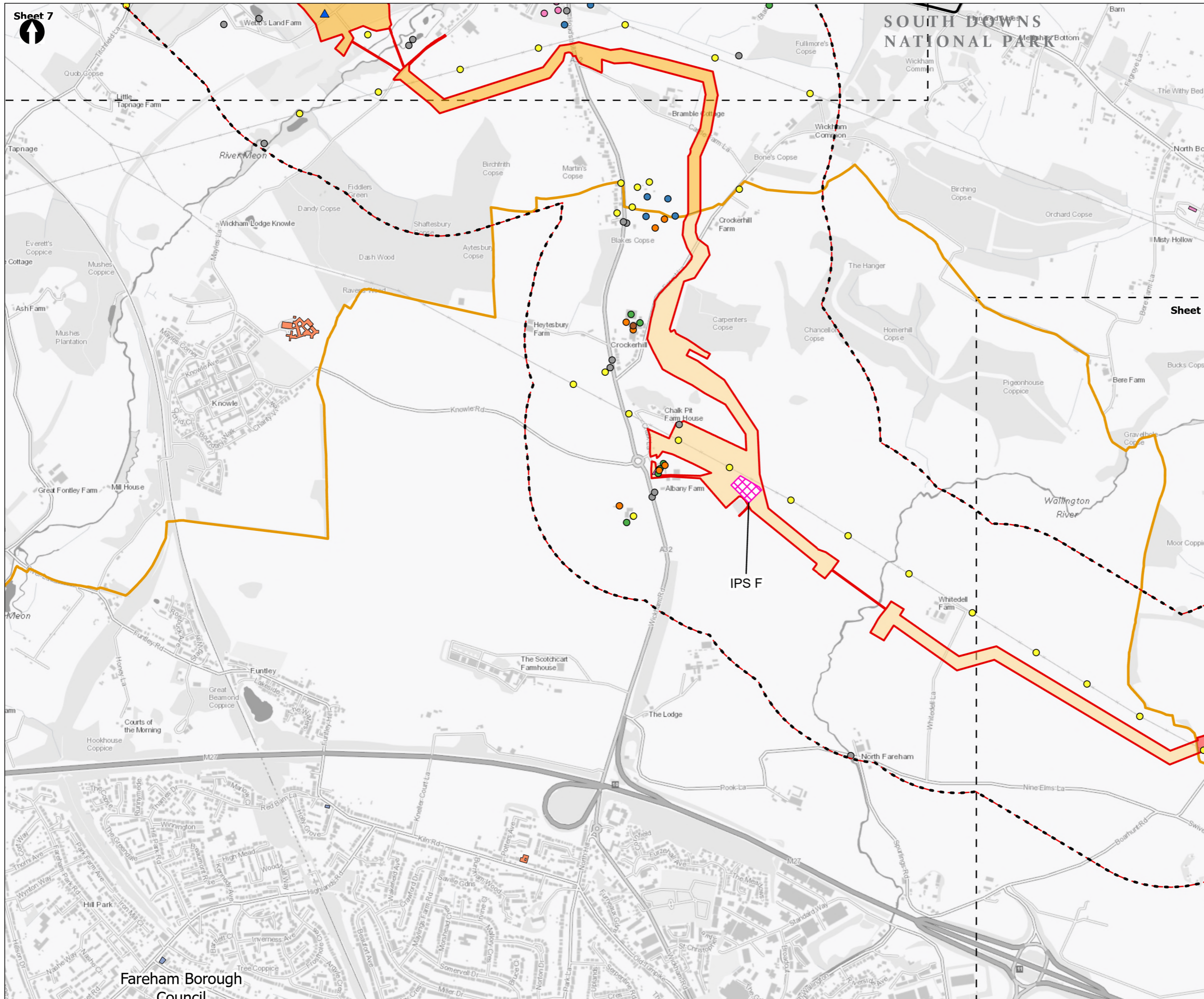


Figure 12.3  
 Commercial property and land  
 Sheet 5 of 13

Drawn DL	GIS Checked MW	Checked MP	Approved AK
Scale at A3 1:15,000	Status Final	Revision 05	Security STD



Drawing Number  
 PC5223-RHD-ES-ZZ-D-Z-0124



- Order Limits
- Land use and agriculture study area (500m buffer)
- Sheet Extent Boxes 1:15K
- National Parks
- Local planning authorities
- Points of Interest (POI)**
- Attractions
- Commercial Services
- Manufacturing and Production
- Public Infrastructure
- Retail
- Sport and Entertainment
- Transport
- Noise Sensitive Receptors**
- ▲ Business park
- ▲ Open space and recreation
- Important Buildings**
- Medical Care
- Retail
- Sports Or Exercise Facility
- Pipeline between the Water Recycling Plant site and Otterbourne Water Supply Works**
- Section E: Portsdown Hill to Boarhunt
- Section F: Boarhunt to Crockerhill
- Section G: Crockerhill to Wickham
- Above Ground Plant**
- Intermediate Pumping Station

Coordinate system: British National Grid; Datum: OSGB 1936  
 Data sources: © Crown copyright and database rights 2026 Ordnance Survey 0100031673. Contains OS data © Crown Copyright and database right 2020, Sources: Esri, TomTom, Garmin, FAO, NOAA, USGS, © OpenStreetMap contributors, and the GIS User Community

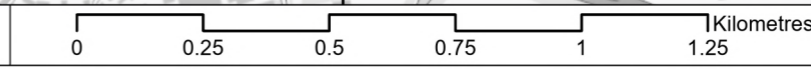
PROJECT TITLE  
 Hampshire Water Transfer and Water Recycling Project



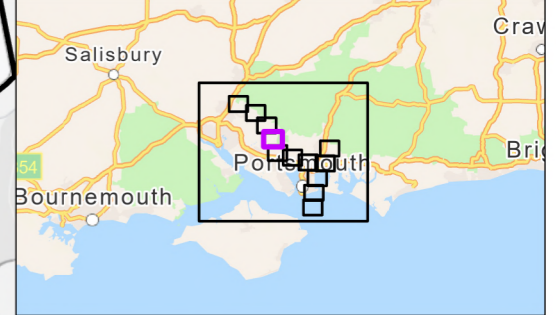
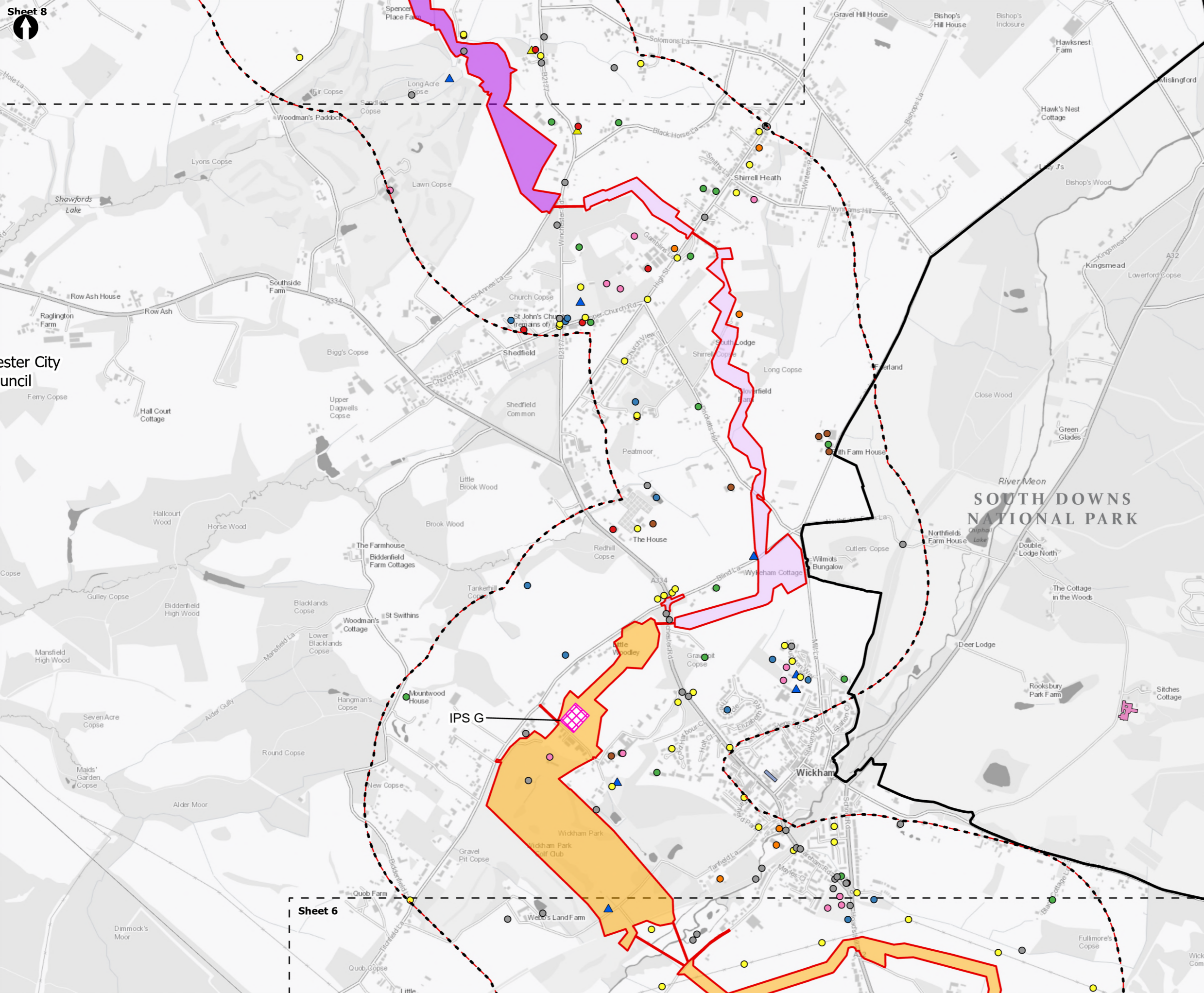
Figure 12.3  
 Commercial property and land  
 Sheet 6 of 13

Drawn <b>DL</b>	GIS Checked <b>MW</b>	Checked <b>MP</b>	Approved <b>AK</b>
Scale at A3 <b>1:15,000</b>	Status <b>Final</b>	Revision <b>05</b>	Security <b>STD</b>

Drawing Number  
**PC5223-RHD-ES-ZZ-D-Z-0124**



Fareham Borough  
 Council



- Order Limits
- Land use and agriculture study area (500m buffer)
- Sheet Extent Boxes 1:15K
- National Parks
- Local planning authorities
- Points of Interest (POI)**
- Accomodation, eating and drinking
- Attractions
- Commercial Services
- Manufacturing and Production
- Public Infrastructure
- Retail
- Sport and Entertainment
- Transport
- Noise Sensitive Receptors**
- ▲ Open space and recreation
- ▲ Restaurant
- Important Buildings**
- Retail
- Sports Or Exercise Facility
- Pipeline between the Water Recycling Plant site and Otterbourne Water Supply Works**
- Section G: Crockerhill to Wickham
- Section H: Wickham to Shedfield
- Section J: Shedfield to the River Hamble
- Above Ground Plant**
- Intermediate Pumping Station

Coordinate system: British National Grid; Datum: OSGB 1936  
 Data sources: © Crown copyright and database rights 2026 Ordnance Survey 0100031673. Contains OS data © Crown Copyright and database right 2020, Sources: Esri, TomTom, Garmin, FAO, NOAA, USGS, © OpenStreetMap contributors, and the GIS User Community

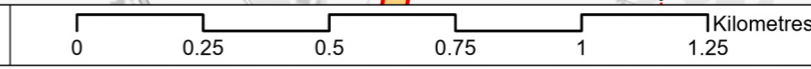
PROJECT TITLE  
 Hampshire Water Transfer and Water Recycling Project

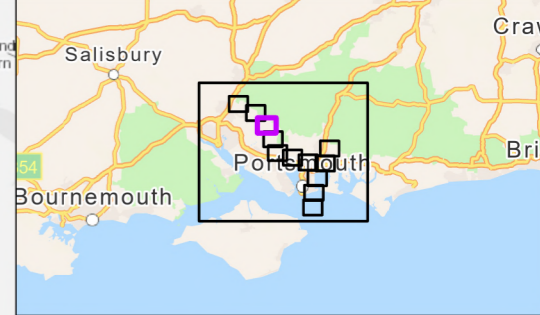
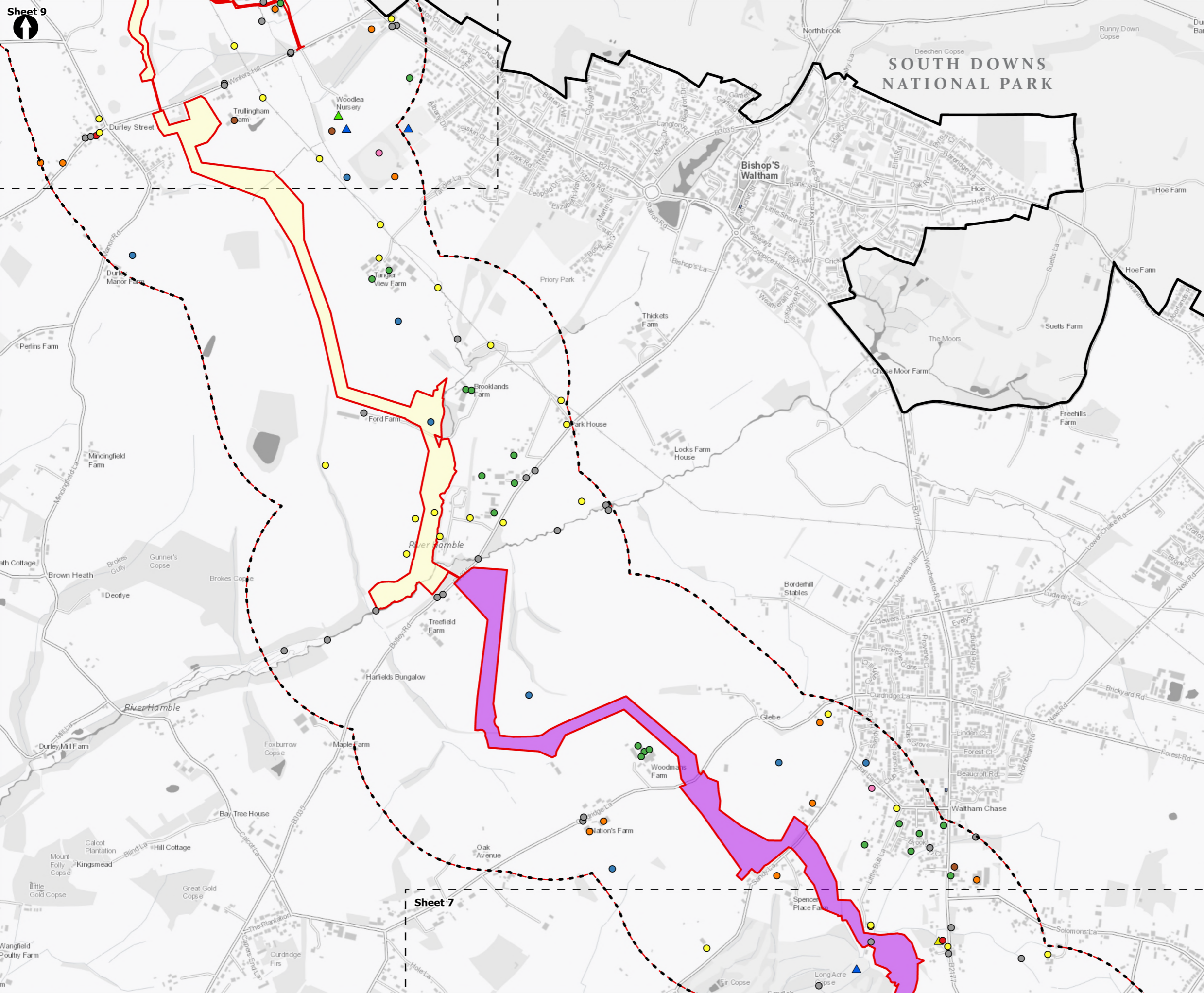


Figure 12.3  
 Commercial property and land  
 Sheet 7 of 13

Drawn <b>DL</b>	GIS Checked <b>MW</b>	Checked <b>MP</b>	Approved <b>AK</b>
Scale at A3 <b>1:15,000</b>	Status <b>Final</b>	Revision <b>05</b>	Security <b>STD</b>

Drawing Number  
**PC5223-RHD-ES-ZZ-D-Z-0124**





- Order Limits
- Land use and agriculture study area (500m buffer)
- Sheet Extent Boxes 1:15K
- National Parks
- Local planning authorities
- Points of Interest (POI)**
- Accomodation, eating and drinking
- Attractions
- Commercial Services
- Manufacturing and Production
- Public Infrastructure
- Retail
- Sport and Entertainment
- Transport
- Noise Sensitive Receptors**
- ▲ Open space and recreation
- ▲ Restaurant
- ▲ Shop
- Important Buildings**
- Retail
- Pipeline between the Water Recycling Plant site and Otterbourne Water Supply Works**
- Section J: Shedfield to the River Hamble
- Section K: The River Hamble to Lower Upham

Coordinate system: British National Grid; Datum: OSGB 1936  
 Data sources: © Crown copyright and database rights 2026 Ordnance Survey 0100031673. Contains OS data © Crown Copyright and database right 2020, Sources: Esri, TomTom, Garmin, FAO, NOAA, USGS, © OpenStreetMap contributors, and the GIS User Community

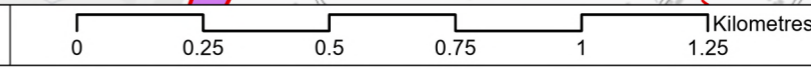
PROJECT TITLE  
 Hampshire Water Transfer and Water Recycling Project

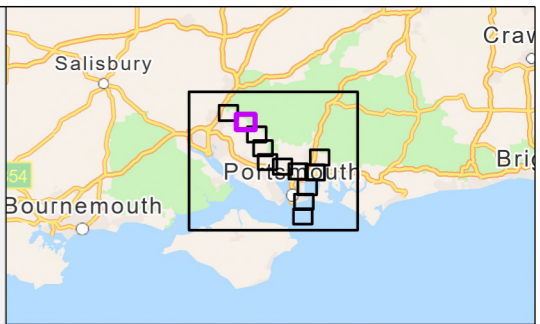
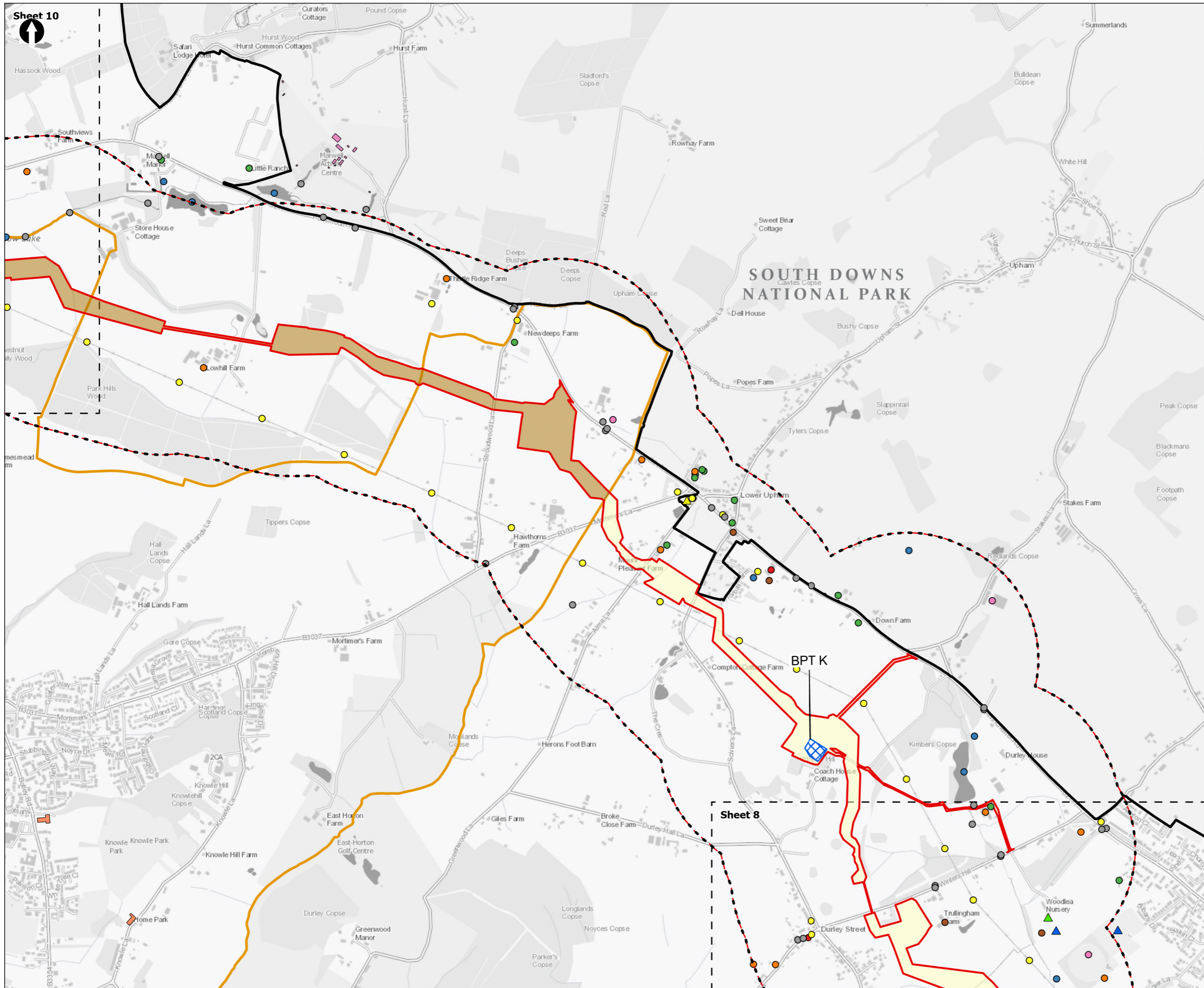


Figure 12.3  
 Commercial property and land  
 Sheet 8 of 13

Drawn <b>DL</b>	GIS Checked <b>MW</b>	Checked <b>MP</b>	Approved <b>AK</b>
Scale at A3 <b>1:15,000</b>	Status <b>Final</b>	Revision <b>05</b>	Security <b>STD</b>

Drawing Number  
**PC5223-RHD-ES-ZZ-D-Z-0124**





- Order Limits
- Land use and agriculture study area (500m buffer)
- Sheet Extent Boxes 1:15K
- National Parks
- Local planning authorities
- Points of Interest (POI)**
- Accomodation, eating and drinking
- Attractions
- Commercial Services
- Manufacturing and Production
- Public Infrastructure
- Retail
- Sport and Entertainment
- Transport
- Noise Sensitive Receptors**
- ▲ Open space and recreation
- ▲ Restaurant
- ▲ Shop
- Important Buildings**
- Medical Care
- Sports Or Exercise Facility
- Pipeline between the Water Recycling Plant site and Otterbourne Water Supply Works**
- Section K: The River Hamble to Lower Upham
- Section L: Lower Upham to Brambridge
- Above Ground Plant**
- Break Pressure Tank

Coordinate system: British National Grid; Datum: OSGB 1936  
 Data sources: © Crown copyright and database rights 2026 Ordnance Survey 0100031673. Contains OS data © Crown Copyright and database right 2020, Sources: Esri, TomTom, Garmin, FAO, NOAA, USGS, © OpenStreetMap contributors, and the GIS User Community

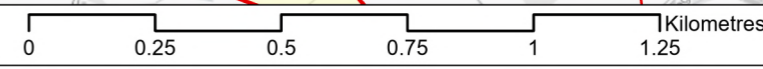
PROJECT TITLE  
 Hampshire Water Transfer and Water Recycling Project

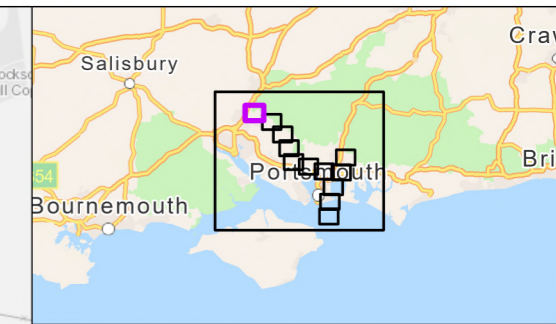
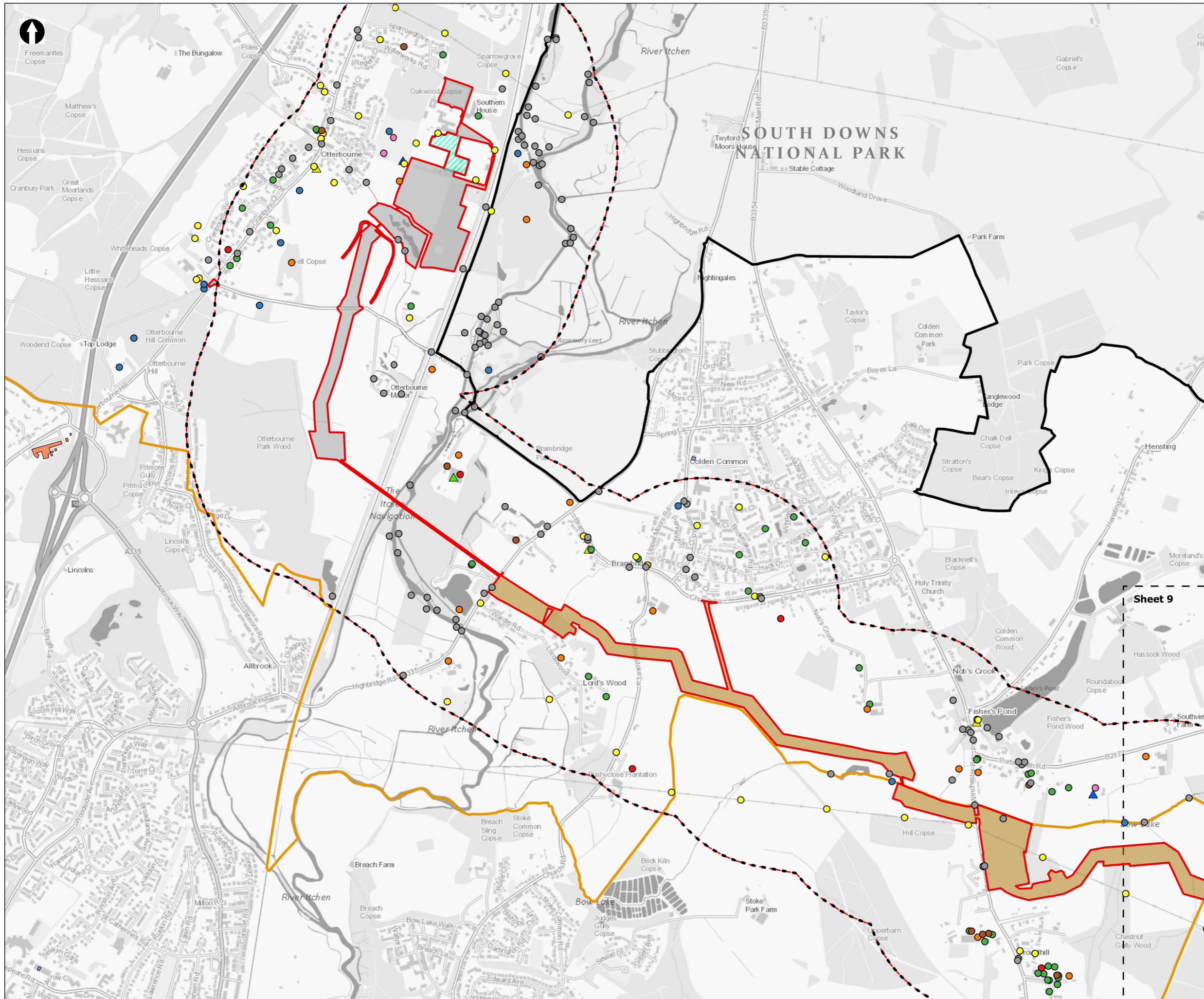


Figure 12.3  
 Commercial property and land  
 Sheet 9 of 13

Drawn DL	GIS Checked MW	Checked MP	Approved AK
Scale at A3 1:15,000	Status Final	Revision 05	Security STD

Drawing Number  
 PC5223-RHD-ES-ZZ-D-Z-0124





**Order Limits**

**Land use and agriculture study area (500m buffer)**

**Sheet Extent Boxes 1:15K**

**National Parks**

**Local planning authorities**

**Points of Interest (POI)**

- Accommodation, eating and drinking
- Attractions
- Commercial Services
- Manufacturing and Production
- Public Infrastructure
- Retail
- Sport and Entertainment
- Transport

**Noise Sensitive Receptors**

- Open space and recreation
- Restaurant
- Shop

**Important Buildings**

- Medical Care
- Retail

**Pipeline between the Water Recycling Plant site and Otterbourne Water Supply Works**

- Section L: Lower Upham to Brambridge
- Section M: Brambridge to Otterbourne Water Supply Works
- Limits of Deviation for Otterbourne INNS Treatment Plant

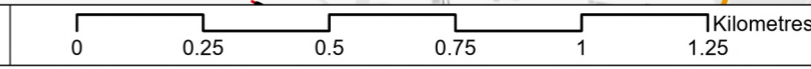
Coordinate system: British National Grid; Datum: OSGB 1936  
 Data sources: © Crown copyright and database rights 2026 Ordnance Survey 0100031673. Contains OS data © Crown Copyright and database right 2020, Sources: Esri, TomTom, Garmin, FAO, NOAA, USGS, © OpenStreetMap contributors, and the GIS User Community

PROJECT TITLE  
 Hampshire Water Transfer and Water Recycling Project

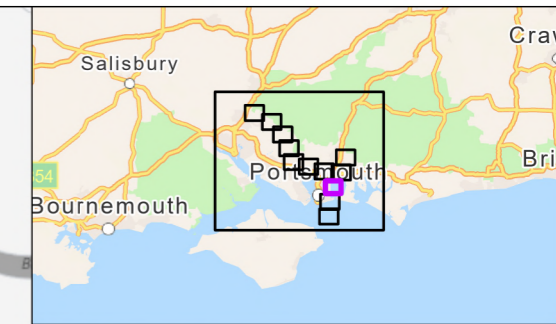
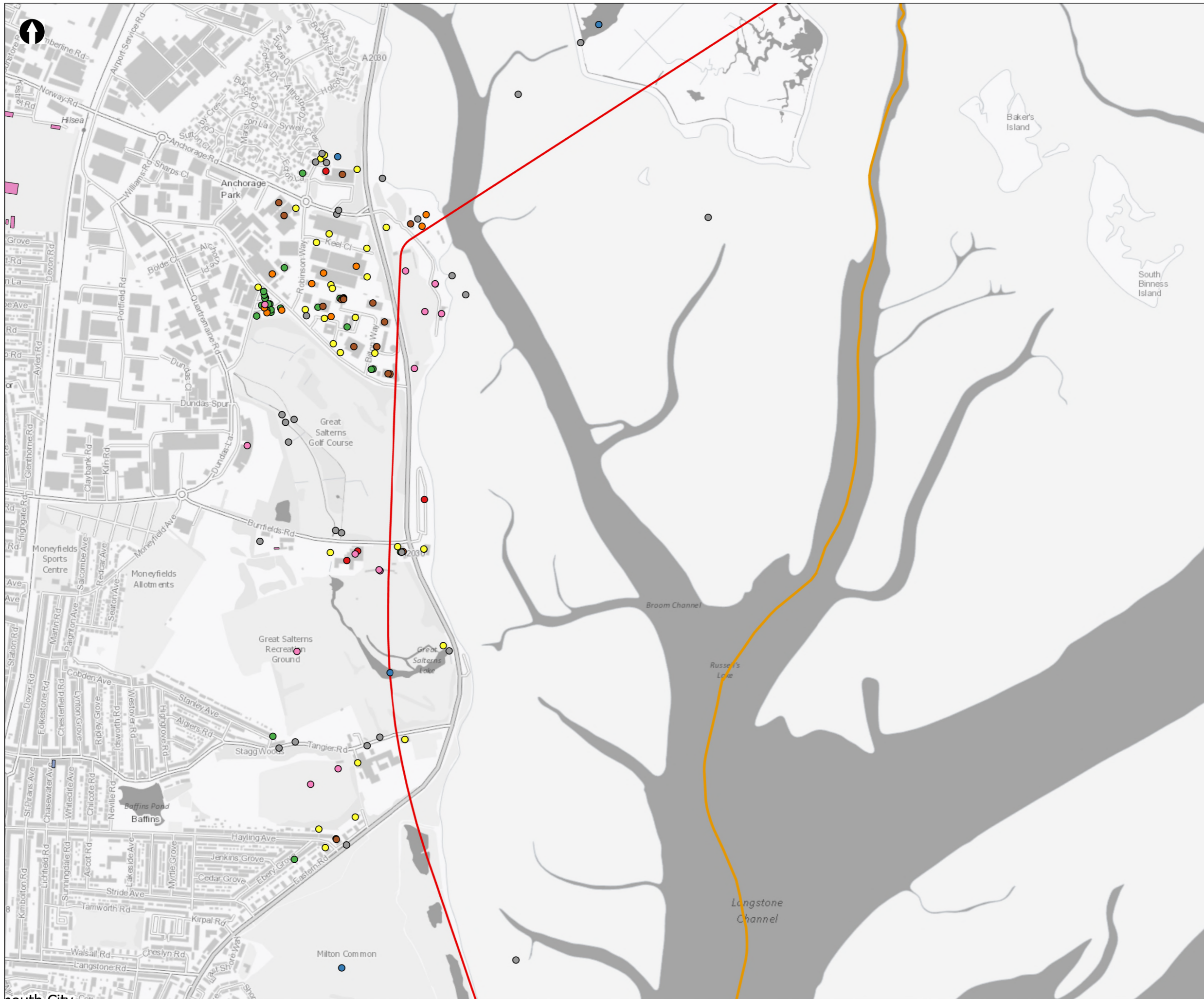


Figure 12.3  
 Commercial property and land  
 Sheet 10 of 13

Drawn DL	GIS Checked MW	Checked MP	Approved AK
Scale at A3 1:15,000	Status Final	Revision 05	Security STD



Drawing Number  
 PC5223-RHD-ES-ZZ-D-Z-0124



**Order Limits**

**Sheet Extent Boxes 1:15K**

**Local planning authorities**

**Points of Interest (POI)**

- Accommodation, eating and drinking
- Attractions
- Commercial Services
- Manufacturing and Production
- Public Infrastructure
- Retail
- Sport and Entertainment
- Transport

**Important Buildings**

- Retail
- Sports Or Exercise Facility

Coordinate system: British National Grid; Datum: OSGB 1936  
 Data sources: © Crown copyright and database rights 2026 Ordnance Survey 0100031673. Contains OS data © Crown Copyright and database right 2020. Sources: Esri, TomTom, Garmin, FAO, NOAA, USGS, © OpenStreetMap contributors, and the GIS User Community

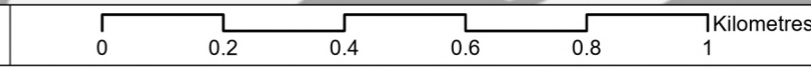
PROJECT TITLE  
 Hampshire Water Transfer and Water Recycling Project

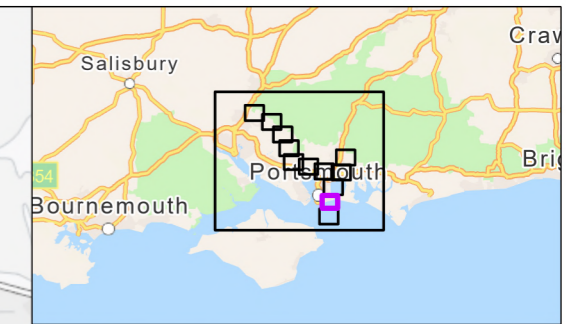
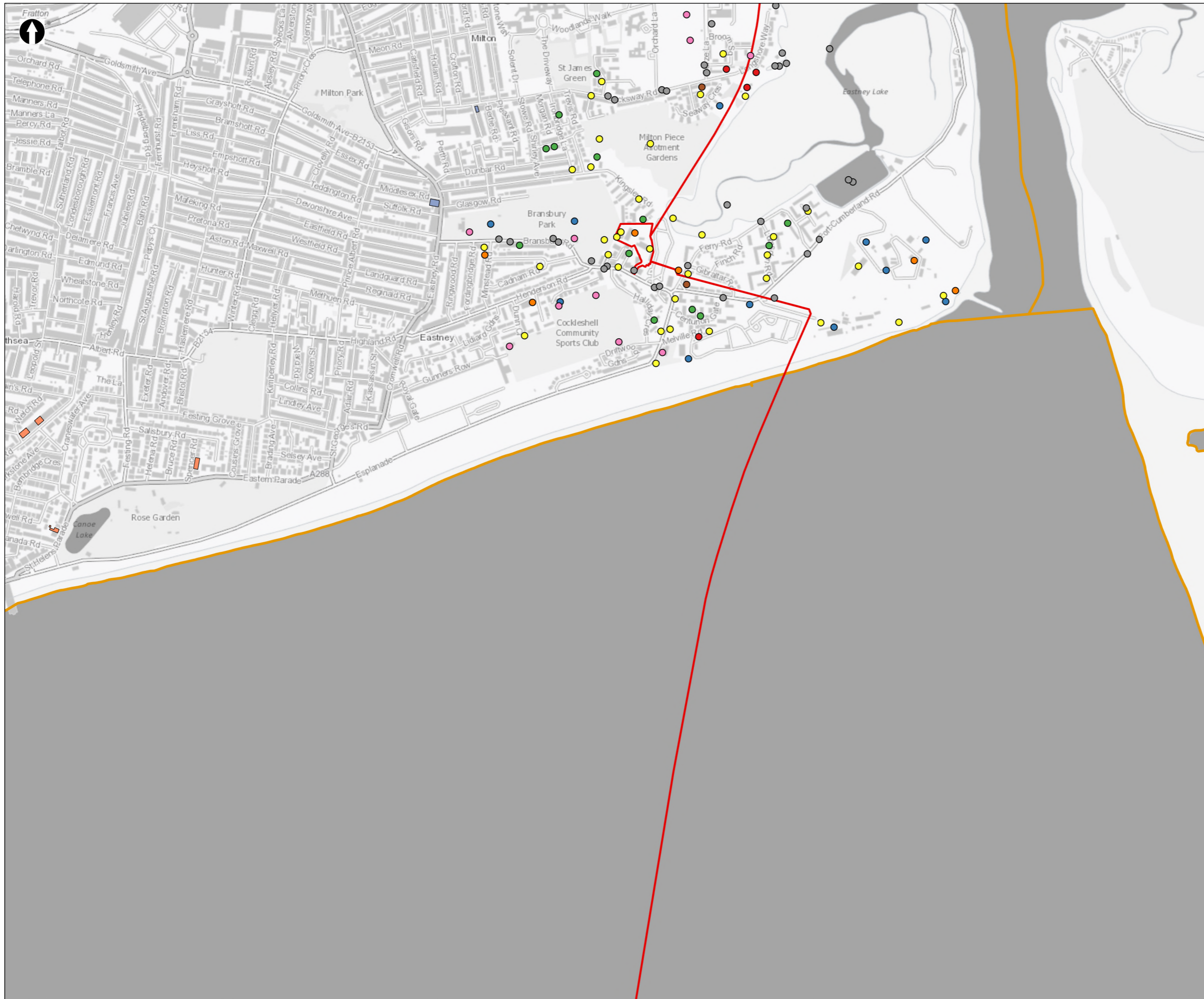


Figure 12.3  
 Commercial property and land  
 Sheet 11 of 13

Drawn <b>DL</b>	GIS Checked <b>MW</b>	Checked <b>MP</b>	Approved <b>AK</b>
Scale at A3 <b>1:12,500</b>	Status <b>Final</b>	Revision <b>05</b>	Security <b>STD</b>

Drawing Number  
**PC5223-RHD-ES-ZZ-D-Z-0124**





**Order Limits**  
 Order Limits

**Sheet Extent Boxes 1:15K**  
 Sheet Extent Boxes 1:15K

**Local planning authorities**  
 Local planning authorities

**Points of Interest (POI)**

- Accomodation, eating and drinking
- Attractions
- Commercial Services
- Manufacturing and Production
- Public Infrastructure
- Retail
- Sport and Entertainment
- Transport

**Important Buildings**

- Medical Care
- Retail

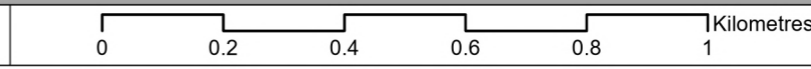
Coordinate system: British National Grid; Datum: OSGB 1936  
 Data sources: © Crown copyright and database rights 2026 Ordnance Survey 0100031673. Contains OS data © Crown Copyright and database right 2020, Sources: Esri, TomTom, Garmin, FAO, NOAA, USGS, © OpenStreetMap contributors, and the GIS User Community

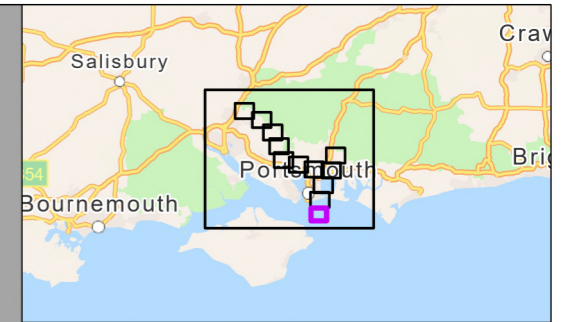
PROJECT TITLE  
 Hampshire Water Transfer and Water Recycling Project


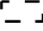


Figure 12.3  
 Commercial property and land  
 Sheet 12 of 13

Drawn <b>DL</b>	GIS Checked <b>MW</b>	Checked <b>MP</b>	Approved <b>AK</b>
Scale at A3 <b>1:12,500</b>	Status <b>Final</b>	Revision <b>05</b>	Security <b>STD</b>





 Order Limits  
 Sheet Extent Boxes 1:15K

Coordinate system: British National Grid; Datum: OSGB 1936  
 Data sources: © Crown copyright and database rights 2026 Ordnance Survey 0100031673. Contains OS data © Crown Copyright and database right 2020, Sources: Esri, TomTom, Garmin, FAO, NOAA, USGS, © OpenStreetMap contributors, and the GIS User Community

PROJECT TITLE  
 Hampshire Water Transfer and Water Recycling Project



Figure 12.3  
 Commercial property and land  
 Sheet 13 of 13

Drawn <b>DL</b>	GIS Checked <b>MW</b>	Checked <b>MP</b>	Approved <b>AK</b>
Scale at A3 <b>1:12,500</b>	Status <b>Final</b>	Revision <b>05</b>	Security <b>STD</b>

Drawing Number  
**PC5223-RHD-ES-ZZ-D-Z-0124**

